

Welcome to PARK & RIDE in Bristol & South Gloucestershire

Your quick and easy bus services into the centre of Bristol

Valid from September 2023

- 9** Brislington Portway
- m2** Long Ashton
- m3** **m3x** Lyde Green
- m4** Parkway North
- Y1** **Y2** **Y6** Yate



South Gloucestershire sites

- The sites are operated by South Gloucestershire Council Parking Services.
- There are height restrictions at the South Gloucestershire sites 7'6" / 2.3 metres.
- Vehicles and contents are left at owner's own risk.
- For a list of facilities at the sites, visit travelwest.info/park-ride
- If you have concerns about the sites, please call **StreetCare** on **01454 868000**.

Lyde Green

- Located off the Rosary roundabout A4174 on Willowherb Road **BS16 7LX**.
- Parking is limited to 19 hours between 0500–2400 Monday to Saturday.
- No limit on Sundays and Public Holidays.
- Car parking is free.

Parkway North

- Located to the east of Parkway rail station on Hunts Ground, Stoke Gifford **BS34 8PU**.
- The station is a 6-minute walk (450 metres).
- Parking is limited to 18 hours.
- There is a parking charge at Parkway North payable via the MiPermit app, **location number 705301**.

Yate

- Located on the A432 Badminton Road **BS37 5AF**.
- Parking is free and available 24 hours a day, 7 days a week.
- EV charging points are available.

Bus routes, timetables, ticketing and fares can be found online at: travelwest.info/park-ride

Lyde Green

The bus

m3 to Bristol city centre (stop C1) via UWE Campus First Bus

Approx. journey time 35 minutes.

Monday to Friday	Saturday	Sunday & some Public Holidays
First bus 0552	First bus 0712	First bus 0902
Daytime freq. 20 mins Last bus 2236	Daytime freq. 30 mins Last bus 2236	Daytime freq. 30 mins Last bus 1831
Last bus from city centre (stop C2) 2235	Last bus from city centre (stop C2) 2235	Last bus from city centre (stop C2) 1845

m3x to Bristol city centre (stop C1) express commuter service First Bus

Days of operation	Monday to Friday
Times	0702, 0727, 0752

The following Stagecoach West services also call here: **86** to Yate Shopping Centre/Kingswood **462** to Broadmead



Parkway North

The bus

m4 to Bristol city centre via UWE Campus (stop C1) First Bus

Approx. journey time 24 minutes.

Monday to Friday	Saturday	Sunday & some Public Holidays
First bus 0610*	First bus 0654*	First bus 0850*
Daytime freq. 20 mins Last bus 2359*	Daytime freq. 20 mins Last bus 0000*	Daytime freq. 30 mins Last bus 2010*
Last bus from city centre (stop C2) 2340	Last bus from city centre (stop C2) 2340	Last bus from city centre (stop C2) 1910

* Buses leave 2 minutes earlier from Parkway Station (stop D). The following First Bus services also call here: **19** to Bath **Y6** to Yate and Chipping Sodbury.

m4 to Cribbs Causeway (stop E) First Bus

Approx. journey time 22 minutes.

Monday to Friday	Saturday	Sunday & some Public Holidays
First bus 0536	First bus 0609	First bus 0815
Daytime freq. 20 mins Last bus 0001	Daytime freq. 20 mins Last bus 0001	Daytime freq. 30 mins Last bus 1931
Last bus from Cribbs Causeway (stop E) 2345	Last bus from Cribbs Causeway (stop E) 2345	Last bus from Cribbs Causeway (stop E) 1955

First Bus service also calls here: **Y6** to Cribbs Causeway, Southmead Hospital and Bristol bus stn.

The train

Trains run regularly from Bristol Parkway station with services west towards Wales, east towards London, south to Bristol Temple Meads, the West Country, Salisbury & the South Coast, and north towards Gloucester & Birmingham.

WEST link

Parkway North Park & Ride is accessible via the **WEST** link on-demand minibus service.

Visit WESTlink.app for more information and how to book, or call **0117 457 8561**.

Portway

Located on the A4 in Shirehampton **BS11 9QE**

Opening times Monday – Saturday **0515 – 2230**
Sunday & Public Holidays **0830 – 1930**

The bus

9 to Bristol city centre (stop C8) and Broadmead (stop B13) Stagecoach West

Approx. journey time to Broadmead 22 minutes.

This bus continues to Brislington P&R site.

Monday to Saturday	Sunday & some Public Holidays
First bus 0615	First bus 0930
Daytime frequency 15 mins (12 mins peak) Last bus 2040	Daytime frequency 15 mins (12 mins peak) Last bus 1745
Last bus from Broadmead (stop B8) 2057	Last bus from Broadmead (stop B8) 1819

The train

A new railway station has opened beside the Portway Park & Ride site. It is located on the Severn Beach line with half-hourly trains running between Severn Beach and Temple Meads stations (hourly on Sundays).

WEST link

Portway Park & Ride is accessible via the **WEST** link on-demand minibus service.

For more information, visit WESTlink.app or call **0117 457 8561**.



Yate

Y1* **Y2*** to Bristol city centre (stop C9) via Coalpit Heath* / Frampton Cotterell & Winterbourne* and M32 First Bus

Approx. journey time 36 minutes.

Monday to Friday	Saturday	Sunday & some Public Holidays
First buses 0453*, 0656*	First buses 0652*, 0733*	First buses 0822*, 0922*

Combined daytime frequency

15 mins	15 mins	30 mins
2303*, 2323*	2333*, 2341*	2239*, 2314*

Last return buses from city centre (stop C11)

2305*, 2345*	2230*, 0000*	2250*, 2325*
---------------------	---------------------	---------------------

* When not on diversion via Frampton Cotterell & Winterbourne.

Y6 to Bristol bus station via Bristol Parkway rail station, Cribbs Causeway and Southmead Hospital First Bus

Approx. journey time to Bristol Parkway 25 minutes, and Southmead Hospital 60 minutes. Departs stop C

Monday to Friday	Saturday	Sunday & some Public Holidays
First bus 0527	First bus 0523	First bus 0933
Daytime freq. 60 mins Last bus 2007	Daytime freq. 120 mins Last bus 1953	Daytime freq. 120 mins Last bus 1748
Last bus from Bristol bus stn 1845	Last bus from Bristol bus stn 1955	Last bus from Bristol bus stn 1755

The following services also call here: **86** to Yate Shopping Centre/Kingswood (Stagecoach West)

The train

Trains run regularly from nearby Yate rail station:

- North to Gloucester from Platform 1
- South to Bristol from Platform 2

WEST link

Yate Park & Ride is accessible via the **WEST** link on-demand minibus service.

For more information, visit WESTlink.app or call **0117 457 8561**.

Long Ashton

Located off the A370 in Long Ashton **BS3 2HB**

Opening times Monday – Saturday **0515 – 2230**
Sunday & Public Holidays **Closed**

The bus

m2 to Broadmead (stop B2) and Bristol city centre (stop C1) First Bus

Approx. journey time 27 minutes.

Monday to Friday	Saturday	Sunday & Public Hols
First bus 0600	First bus 0700	No service
Daytime frequency 15 mins Last bus 2050	Daytime freq. 15 mins Last bus 2050	
Last bus from Broadmead (stop B2) 2110	Last bus from Broadmead (stop B2) 2110	



505 to Southmead Hospital via Clifton Village Stagecoach West

Approx. journey time 39 minutes.

Monday to Saturday	Sunday & Public Holidays
First bus 0555	No service from the Park & Ride site. Buses run hourly between 1008 and 1808 from Blackmoors Lane, Bower Ashton outside the site. Last bus from Southmead Hospital 1825
Daytime frequency 30 mins Last bus 2055	
Last bus from Southmead Hospital to the P&R site 2010	

More information

For Lost property and comments about the Park & Ride bus services, please contact the relevant bus operator.

Bus operators

First West of England
Enterprise House, Easton Road, Bristol BS5 0DZ
☎ **0345 646 0707** (0900–1700 Monday to Friday)
👉 complete the online registration form at: firstbus.co.uk/contact-woe

Stagecoach West
3rd Floor, 65 London Road, Gloucester GL1 3HF
☎ **0345 241 8000** (0800–1800 Mon to Fri, 0900–1700 Sat & Sun)
✉ west.enquiries@stagecoachbus.com
👉 Stagecoachbus.com/help-and-contact

Bus routes, timetables, ticketing, and fares Available online at: travelwest.info/park-ride



Scan here to go direct to our website

Rail information
National Rail Enquiries
03457 48 49 50 or visit: nationalrail.co.uk

For all other queries relating to public transport in the region

✉ transport.operations@westofengland-ca.gov.uk
☎ **0117 374 1265**

Whilst every effort has been taken to ensure that the information is accurate at the time of publication, West of England Combined Authority is not responsible for any loss, damage or inconvenience resulting from any inaccuracies or subsequent changes. Bus operators may alter their services at short notice so it is advisable to obtain the latest timetables.

Fares information

First Bus – services **m2, m3, m3x, m4, Y1, Y2 & Y6**

Note metrobus is a buy before you board and Tap on, Tap off service.
Tap on, Tap off contactless payment for one adult per card/device is available on all First Buses.

	Bristol Zone	West of England Zone
2-Trip (Return)	£3.80	£4 (3–6 miles) on bus £5 (>6 miles) on bus and app
FirstDay	£6	£7
Group weekday (up to 5 people on all First Buses in the Bristol Zone)	£12	£14
Day ticket bundles are available on the app for ... any 3 or 5 days in a 10-day period, any 6 or 10 days in a 20-day period, or 12 or 20 days in a 40-day period.		
FirstWeek*	£23.50	£30
FirstMonth*	£83.80#	£95

* Available online # Not available on the bus

Stagecoach West – service **9**

Return	£3.50 where available
Group Day (travel on most Stagecoach West buses within Bristol and South Gloucestershire, for up to 4 people)	£12 on the bus and app
7-day service 9 MegaRider	£13 online or on the app £14 on the bus
28-day MegaRider	£47 online or on the app
MegaRider Xtra – a recurring monthly ticket	£44 online

Regular bus operator fares apply to services 86, 462 and 505.

Park & Ride made easy ...

Whether you are commuting, shopping, or visiting, park your car and ride in comfort to your destination. It's quick, easy, helps reduce congestion and improve air quality.

The buses

- Comfortable seating.
- Free wi-fi and USB charging points on most buses.
- All are low-floored and wheelchair accessible.

The trains

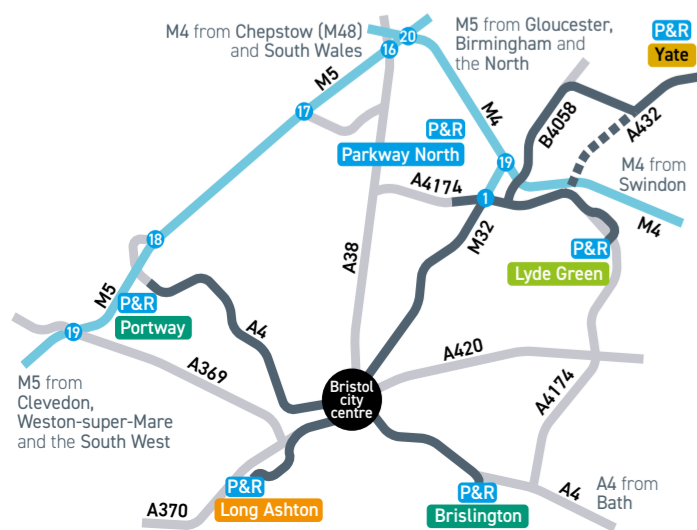
Parkway North, Portway, and Yate Park & Ride sites are close to railway stations where you can continue your journey by train.

WEST link

The **WEST** link on-demand minibus service is available in certain areas. It can get you to **Parkway North, Portway** and **Yate** Park & Ride sites. You can then pick up a scheduled bus or train from here.

Visit WESTlink.app for more information and how to book, or call **0117 457 8561**.

Map of Park & Ride locations



Bristol sites

- Brislington, Portway, and Long Ashton Park & Ride sites are operated by Bristol City Council Parking Services.
- Car parking is free and for bus and rail users only.
- There are height restrictions at the Bristol sites 6'10" / 2.1 metres.
- Vehicles and contents are left at owner's own risk.
- Overnight parking is not allowed. The sites are locked overnight. Please call **Parking Services** on **0117 903 1550** if your car is locked in.
- EV charging points are available.
- For a list of facilities at the sites, visit travelwest.info/park-ride
- For any concerns about the sites, email passenger.transport@bristol.gov.uk
- For bus services over the Easter, Christmas, and New Year period, please visit travelwest.info

Ways to pay

- Contactless on the bus with your bank card (look for the contactless symbol).
- Bus operators' app available on the Apple App store and Google Play.
- Cash on the bus (except metrobus services).
- Online via bus operators' websites.
- English concessionary bus pass (after 0900 Monday to Friday, and any time weekends and Public Holidays).

Return adult fares

A selection of ticket types are listed in this leaflet. For the full range of tickets available, please visit

travelwest.info/park-ride or the bus operators' websites.

Brislington

Located on the A4 in Brislington **BS4 5LR**

Opening times Monday – Saturday **0515 – 2230**
Sunday & Public Holidays **0830 – 1930**

The bus

9 to Broadmead (stop B8) and Bristol city centre (stop C7) Stagecoach West

Approx. journey time to Broadmead 21 minutes.

This bus continues to Portway P&R site.

Monday to Saturday	Sunday & some Public Holidays
First bus 0608	First bus 0938
Daytime frequency 15 mins (12 mins peak Mon–Fri) Last bus 2033	Daytime frequency 15 mins Last bus 1753
Last bus from Broadmead (stop B13) 2105	Last bus from Broadmead (stop B13) 1812

Travelling on more buses in the West of England region?

Rider tickets are multi-operator tickets that give you virtually unlimited travel on buses in defined zones.

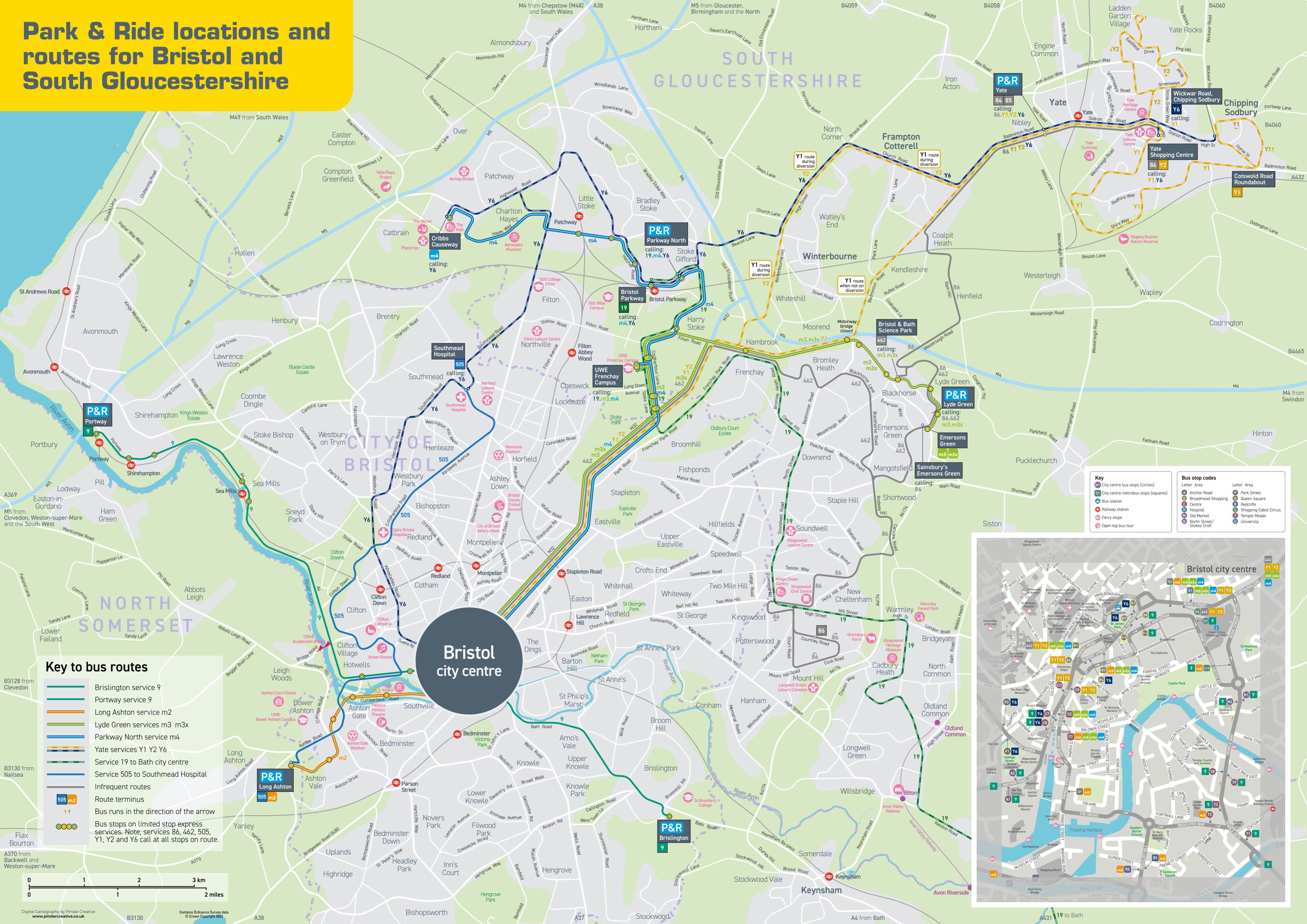
The **Avon Rider** zone covers Bath & North East Somerset, Bristol, North Somerset, and South Gloucestershire.

The **Bristol Rider** zone is approximately within a 6-mile radius of Bristol centre.

Tickets are valid on the day of issue up to 0259 the following morning. Take as many journeys as you like during that time. Weekly tickets are also available.

For all **Rider** tickets, please visit travelwest.info/tickets-travelcards

Park & Ride locations and routes for Bristol and South Gloucestershire



Bristol city centre

Key to bus routes

- Brislington service 9
- Portway service 9
- Long Ashton service m2
- Lyde Green services m3 m3x
- Parkway North service m4
- Yate services Y1 Y2 Y6
- Service 19 to Bath city centre
- Service 505 to Southmead Hospital
- Infrequent routes
- Route terminus
- Bus runs in the direction of the arrow
- Bus stops on limited stop express services. Note, services 86, 462, 505, Y1, Y2 and Y6 call at all stops on route.

Key

- City centre bus stops (circles)
- City centre metrobus stops (squares)
- Bus station
- Railway station
- Ferry stops
- Open top bus tour

Bus stop codes

Letter Area	Letter Area
Anchor Road	Park Street
Broadmead Shopping Centre	Queen Square
Bus Hospital	Roadside
City Centre	Shopping Cabot Circus
Old Market	Temple Meads
North Street/Stokes Croft	University

